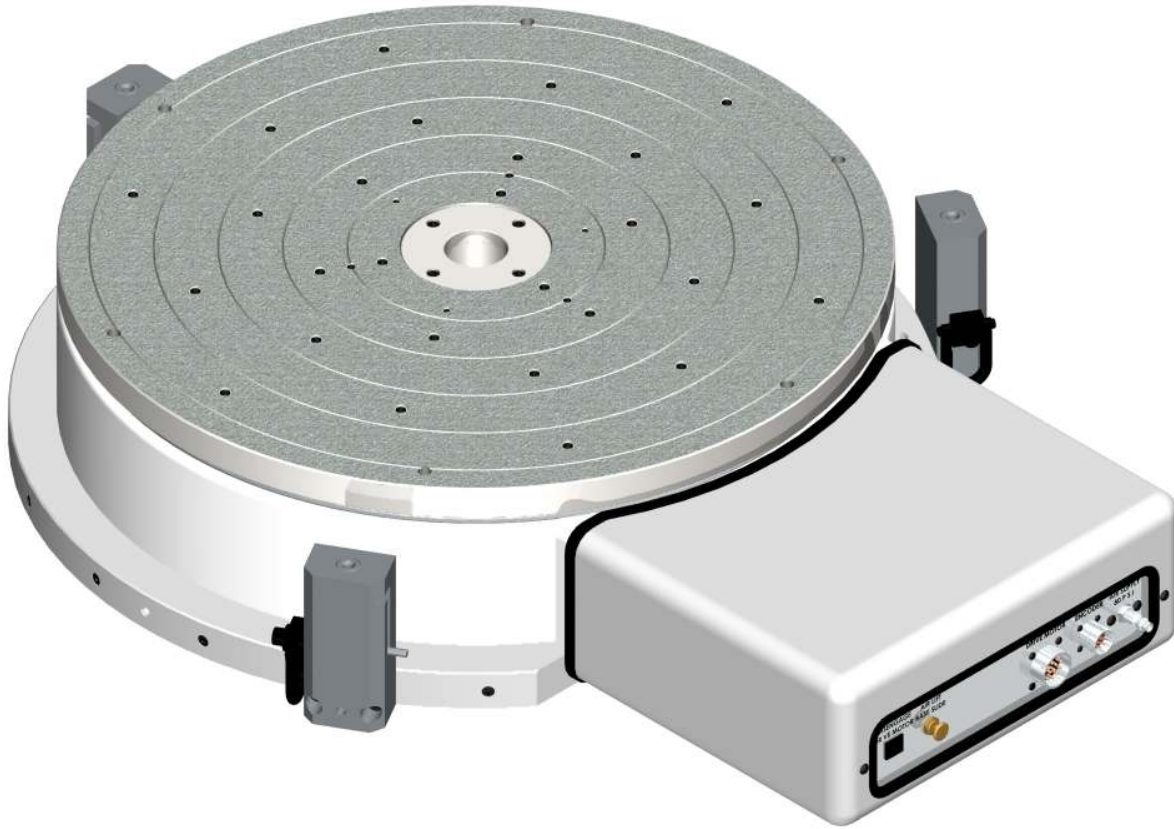


# Air Float Capstan Servo (AFCS) Rotary Tables

## RT26-AFCS



**RT26 Face Plate Geometry Specifications**

Description	Accuracy Grades		
	30	50	100
<b>Face Plate Runout</b> at 11.0 in. (279.4 mm) Radius	0.000080 (.00203 mm)	0.000130 (.0033 mm)	0.000260 (.0066 mm)
<b>Base Runout</b> at 13.5 in. (342.9 mm) Radius	0.000080 (.00203 mm)	0.000130 (.0033 mm)	0.000260 (.0066 mm)
<b>Face Plate Dish</b> (Flatness)	0.000080 (.00203 mm)	0.000130 (.0033 mm)	0.000260 (.0066 mm)
<b>Center Pilot Runout</b>	0.000050 (.00127 mm)	0.000100 (.0025 mm)	0.000200 (.0051 mm)

Note- Geometry Specifications apply when the Air Float Rotary Table is locked. (Air Float off)

Load Capacity Radial	Load Capacity Thrust	Operating Air Pressure	Air Flow	RT Weight
800 lbs. (364 kg)	8,235 lbs. (3,743 kg)	80 PSI (5.5 Bar)	25 CFH (0.71 m <sup>3</sup> /h)	730 lbs. (331 kg)

## RT26 Servo Drive Options

Description	Drive Options			
	530	883	1100	1400
Drive Motor	PMI #U12M4T	PMI #U12M4T	PMI #U12M4T	PMI #U12M4T
Tachometer	Yes	Yes	Yes	Yes
Drive Ratio	530:1	883:1	1100:1	1400:1
Maximum RPM	5.6	3.4	2.7	2.1

Performance Grade (Reflected Load Inertia Ratio)							
Drive Ratio	0.5	0.75	1	1.25	1.5	1.75	2
		Inertia Capacity (lb-ft <sup>2</sup> )					
<b>530</b>	269	575	881	1186	1492	1798	2104
<b>883</b>	737	1587	2436	3286	4135	4985	5834
<b>1100</b>	1259	2576	3893	5211	6528	7845	9163
<b>1400</b>	2159	4293	6427	8561	10695	12829	14963
	Inertia Capacity (kg-m <sup>2</sup> )						
<b>530</b>	11.3	24.2	37.1	50.0	62.9	75.8	88.7
<b>883</b>	31.1	66.9	102.7	138.5	174.3	210.1	245.9
<b>1100</b>	53.0	108.6	164.1	219.6	275.1	330.6	386.1
<b>1400</b>	91.0	180.9	270.8	360.8	450.7	540.6	630.5